



## Fall-Hamilton Elementary

325 amazingly brilliant LEADERS in Prek-4<sup>th</sup> grade

### Demographical Data

- |                |            |
|----------------|------------|
| <b>Race</b>    | <b>EL</b>  |
| • 64% Black    | ▶ 10%      |
| • 20% Hispanic |            |
| • 15% White    | <b>SWD</b> |
| • 1% Asian     | ▶ 18.5%    |
| <b>ED</b>      |            |
| • 89% in 15-16 |            |
| • 62% in 16-17 |            |



## Trauma Sensitive Schools Theory of Action

### Problem

- Many students have traumatic experiences (ACEs)
- Trauma can impact learning, behavior, and relationships at school

### Solution

- Trauma sensitive schools help children feel safe to learn through strong stable relationships

### How does this happen

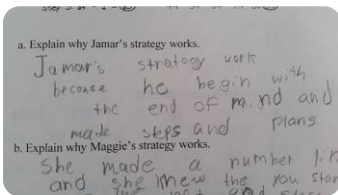
- Being trauma sensitive requires a whole school/community effort through understanding the impacts of trauma!

[Traumasensitiveschools.org](http://Traumasensitiveschools.org)

## Trauma Sensitive Schools Must...

- Have a shared understanding among all staff! Knowledge is power!

- ☐ ACES PD Plan
- ☐ Use of common language adult and children (7Habits)



## Trauma Sensitive Schools Must...

- Ensure that all students feel safe physically, socially, and emotionally.



- ☐ The Leader in Me
- ☐ Peace corners
- ☐ PBIS
- ☐ CICO
- ☐ Morning Meeting in class and by house
- ☐ Trauma Informed Practitioner
- ☐ Mindfulness\*
- ☐ Student Success Center\*

### Trauma Sensitive Schools Must...

- **Address students needs holistically**
  - ☐ SEL Team
  - ☐ Nurse, TIP, Centerstone
  - ☐ Mindfulness
  - ☐ Student Success Center\*



### Trauma Sensitive Schools Must...

- **Connect students to the community and provide multiple opportunities to safely practice their newly developed skills**



- ☐ Morning Meeting/House Morning Meeting
- ☐ Sharpen the Saw Time Weekly

### Trauma Sensitive Schools Must...

- **Embrace teamwork and staff responsibility for all students**
  - ☐ Social Emotional Team
  - ☐ Check-in/Check-out (40+ students)
  - ☐ Student Response Team
  - ☐ School-wide data analysis.
- **Have a commitment from the leadership and staff to anticipate to the ever changing needs of students.**
  - ☐ I GIVE MY TEACHERS THE GREEN LIGHT TO DO THE WORK!
  - ☐ Focus on the focus

### Fall-Hamilton Elementary 321 amazing brilliant students in Prek-4<sup>th</sup>

- |  |   |
|--|---|
| <p><b>2014-2015</b></p> <ul style="list-style-type: none"> <li>➢ 13.1% of students received discipline referral</li> <li>➢ 25 students were suspended a total of 52 days</li> </ul> <p><b>2015-2016</b></p> <ul style="list-style-type: none"> <li>➢ 11.9% of students received a discipline referral</li> <li>➢ 13 students were suspended 30 days.</li> <li>➢ 200 incidents</li> </ul> | <p><b>2016-2017</b></p> <ul style="list-style-type: none"> <li>➢ 32 office referrals (127 in 15/16 at this same time)                     <ul style="list-style-type: none"> <li>➢ 60% in cafeteria and recess</li> </ul> </li> <li>➢ 4 students have been suspended (7 students in 15/16 at this same time)</li> </ul> |
|--|---|

Mathew Portell  
[Mathew.Portell@mnps.org](mailto:Mathew.Portell@mnps.org)  
 615-335-7836  
 @principalest  
 @fallhamiltoneos