

**Full STEAM Ahead:**  
**How Adding Art to your STEM Program Promotes a Creator Culture in a Consumer World**

Leader U 2017  
 Ensuring Equity and Excellence in Education

Welcome & Introductions



**Cindy Pride**  
 Kids On Stage Director

Mt. Pleasant STEAM Innovation Campus

On twitter @KidsOnStage\_

The arts play an increasingly important role in developing well-rounded critical thinkers.

- Discuss how an art infused curriculum widens the scope of student reach and interest in STEM.
- Explore the ways the ARTS can strengthen student learning outcomes.
- Explore how to build a creator culture focused on a STEAM education.

What is an Arts Connected education?

- **It is educating through natural, meaningful, engaging lessons that foster creativity, teamwork, hands-on learning and comprehension. It provides the learner with reference points to help make abstract thoughts and ideas concrete while expanding learners' horizons.**



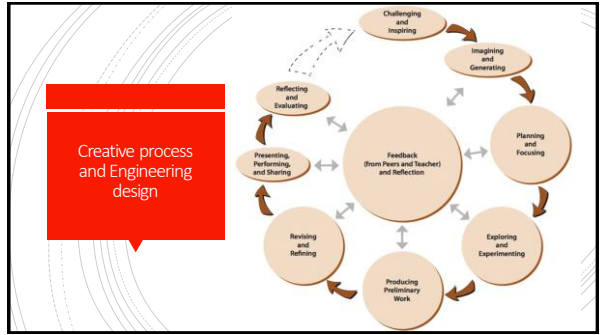
When is a beanbag more than a bean bag?

Before you  
LEARN.....  
..... Create

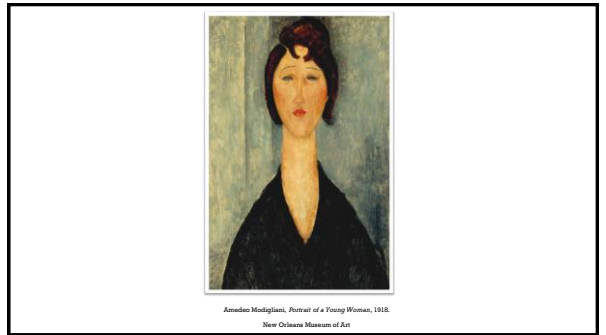
- Think about the **most attractive physical feature of someone you love** (lips, ear lobe, hands, shoulder blades). (Remember, this lesson is for you the TEACHER. Do not give this set of instructions to a high school student.)
- Draw a picture of that person where that feature is enhanced. (See Above)
- What qualities make that feature so beautiful?

Gallery Walk

- Share your work with others at your table table.



“When we direct our attention to exploring masterworks, we borrow the eyes of genius.”  
Eric Booth, *The Everyday Work of Art*, 1999 (174)

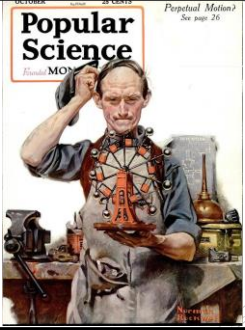


Describe the role of the meal worm within the life cycle of the Darkling Beetle.





5<sup>th</sup> Grade Civil War Era Technology Project



Norman Rockwell

Making connections through Art Experiences

Last words

- Dream BIG/start small
- Think in terms of student & community needs
- Build your Arts programs
- Continue to show your appreciation and train your students to do so as well
- Social Media is your friend

Contact information

- Cindy Pride

[cpride@mauryk12.org](mailto:cpride@mauryk12.org)

On twitter @KidsOnStage\_

